



MKT-0150 Rev. 2

REMARKABLE REVIEWS¹



EVO Visian ICL®

 Evolution in Visual Freedom



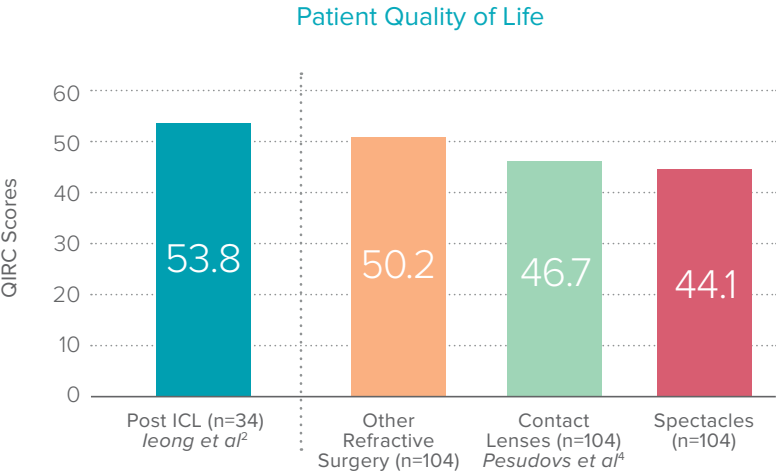
References:

1. Packer M, Meta-analysis and review: effectiveness, safety, and central port design of the intraocular collamer lens. *Clinical Ophthalmology*. 2016;10:1059-1077.
2. Jeong A, Hau S, Rubin GS, Allan B. Quality of Life in High Myopia before and after Implantable Collamer Lens Implantation. *Ophthalmology*. 2010;117:2295-2300.
3. MICL PMA Data.
4. Pesudovs K, Garamendi E, Elliott DB. A quality of life comparison of people wearing spectacles or contact lenses or having undergone refractive surgery. *J Refract Surg*. 2006; 22:19-27.
5. Alfonso JF, Lisa C, Fernández-Vega Cueto L, Belda-Salmerón L, Madrid-Costa D, Montés-Micó R. Clinical outcomes after implantation of a posterior chamber collagen copolymer phakic intraocular lens with a central hole for myopic correction. *J Cataract Refract Surg*. 2013 Jun;39(6):915-21.
6. Huseynova T, Ozaki S, Ishizuka T, Mita M, Tomita M. Comparative study of 2 types of implantable collamer lenses, 1 with and 1 without a central artificial hole. *Am J Ophthalmol*. 2014 Jun;157(6):1136-43.
7. Lisa C, Naveiras M, Alfonso-Bartolozzi B, Belda-Salmerón L, Montés-Micó R, Alfonso JF. Posterior chamber collagen copolymer phakic intraocular lens with a central hole to correct myopia: One-year follow-up. *J Cataract Refract Surg*. 2015 Jun;41(6):1153-9.
8. Parkhurst GD, A Prospective Comparison of Phakic Collamer Lenses and Wavefront-Optimized Laser-Assisted In Situ Keratomileusis for Correction of Myopia. *Clinical Ophthalmology*. 2016;10:1209-1215.
9. Parkhurst GD, Psolka M, Kezirian GM. Phakic Intraocular Lens Implantation in United States Military Warfighters: A Retrospective Analysis of Early Clinical Outcomes of the Visian ICL. 2011;27(7):473-481.

Attention: Reference the EVO Visian ICL Product Information for a complete listing of indications, warnings and precautions.

Patients report an EXCEPTIONAL EXPERIENCE with the EVO Visian ICL Product Family^{2,3}

As reported in the Jeong and Pesudovs studies, as compared with other correction methods, patients reported the highest Quality of Life ratings with Visian ICL^{2,4}



ICL: Implantable Collamer® Lens; QIRC: Quality of life impact of refractive correction.

Analysis of 8 EVO Visian ICL clinical studies reveal a high percentage of eyes achieve and maintain 20/20 or better UCVA¹

Postoperative UCVA for EVO Visian ICL reported at final visit

Study	logMAR UCVA	Approximate Snellen Equivalent
Shimizu <i>et al</i>	-0.20 ± 0.12	20/12.5
Kamiya <i>et al</i>	-0.20 ± 0.11	20/12.5
Shimizu <i>et al</i>	-0.17 ± 0.14	20/12.5
Higuera-Esteban <i>et al</i>	-0.07 ± 0.11	20/16
Huseynova <i>et al</i>	-0.13 ± 0.08	20/16
Alfonso <i>et al</i>	0.009 ± 0.062	20/20
Lisa <i>et al</i>	0.028 ± 0.055	20/20
Fernández-Vigo <i>et al</i>	0.05 ± 0.11	20/20

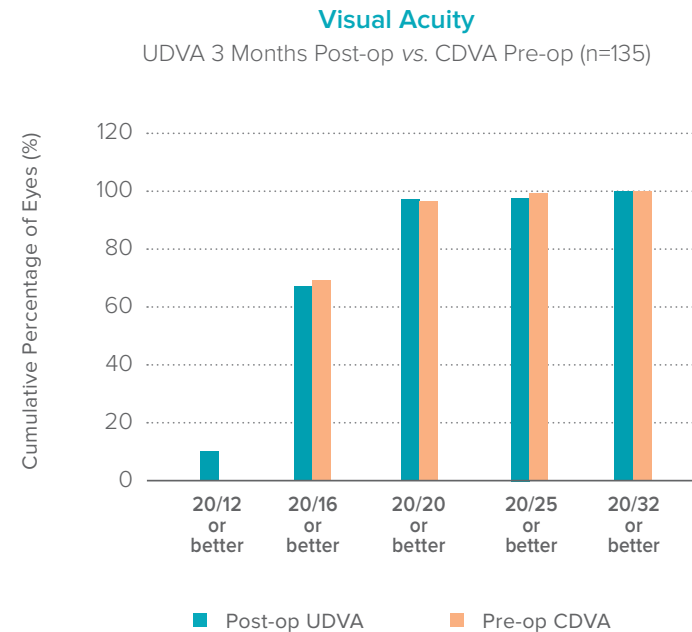
Data are presented as mean ± standard deviation.

Meta Analysis reports that EVO Visian ICL has an unparalleled efficacy index of 1.00–1.03^{5,6,7*}

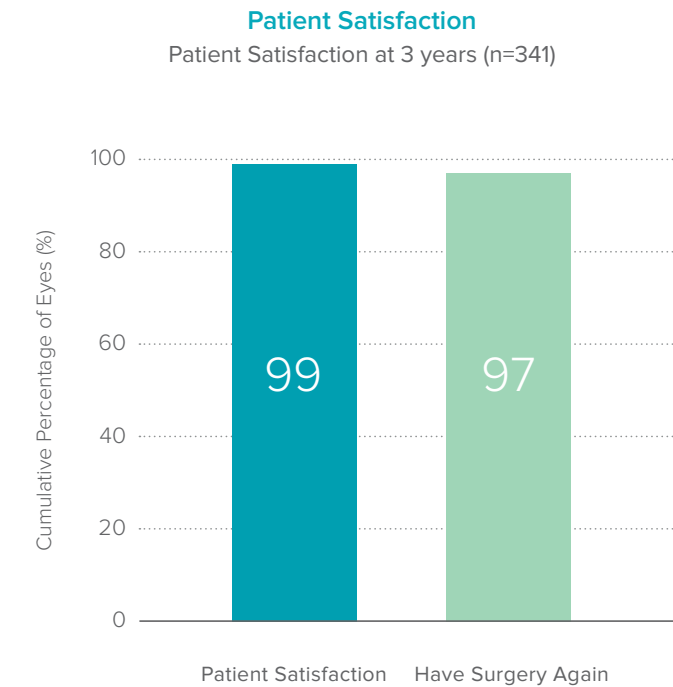
*Efficacy index is defined as UCVA post-op/BCVA pre-op.
ICL: Implantable Collamer® Lens; UDVA: Uncorrected distance visual acuity; CDVA: Corrected distance visual acuity;
UCVA: Uncorrected visual acuity; logMAR: Logarithm of the minimum angle of resolution;
CI: Confidence interval; BCVA: Best corrected visual acuity.

Experts report that the EVO Visian ICL Product Family offers patients OUTSTANDING OUTCOMES¹

In a study by Parkhurst, **67%** of eyes achieve UDVA of **20/16** or better with Visian ICL⁹



In a pivotal FDA study, the EVO Visian ICL Product Family showed **99%** patient satisfaction³



The EVO Visian ICL Product Family provides excellent night vision⁸

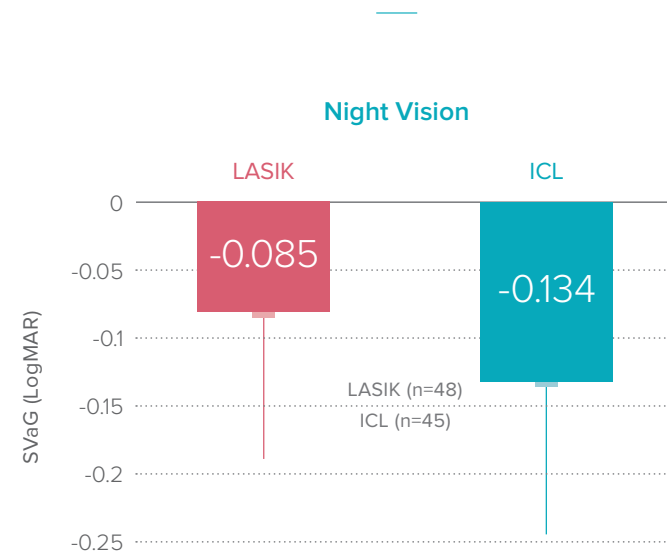


Figure 1 Mean improvement in SVaG.

Notes: At 3 months, mean improvement in SVaG (LogMAR) in the ICL group was statistically significantly greater than the improvement in the LASIK group ($P=0.032^*$; error bars represent SD).

SVaG: Super vision acuity with (low-luminance) goggles; **LogMAR:** Logarithm of the minimum angle of resolution.

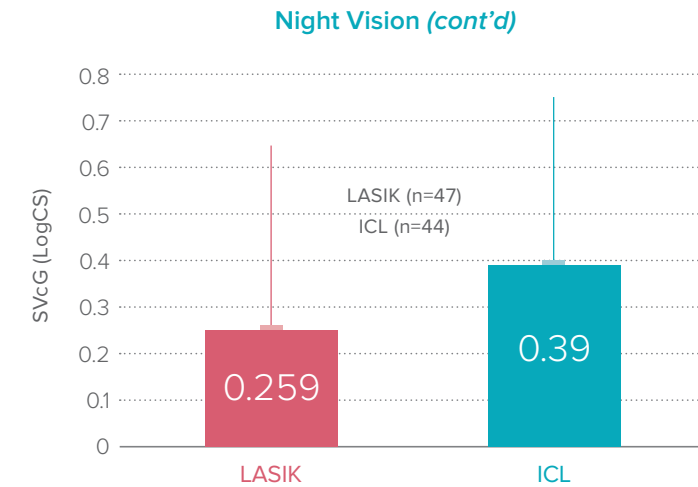


Figure 2 Mean improvement in SVcG.

Notes: At 3 months, mean improvement in SVcG (LogCS) was statistically significantly greater in the ICL group as compared to the LASIK group ($P=0.024^*$; error bars represent SD).

- In the Parkhurst clinical study, the EVO Visian ICL Product Family outperformed LASIK in night conditions⁸
- In the same study, the EVO Visian ICL Product Family provided better visual acuity and contrast sensitivity at night compared with LASIK⁸

SVcG: super vision contrast with (low-luminance) goggles; **LogCS:** logarithm of the contrast sensitivity.